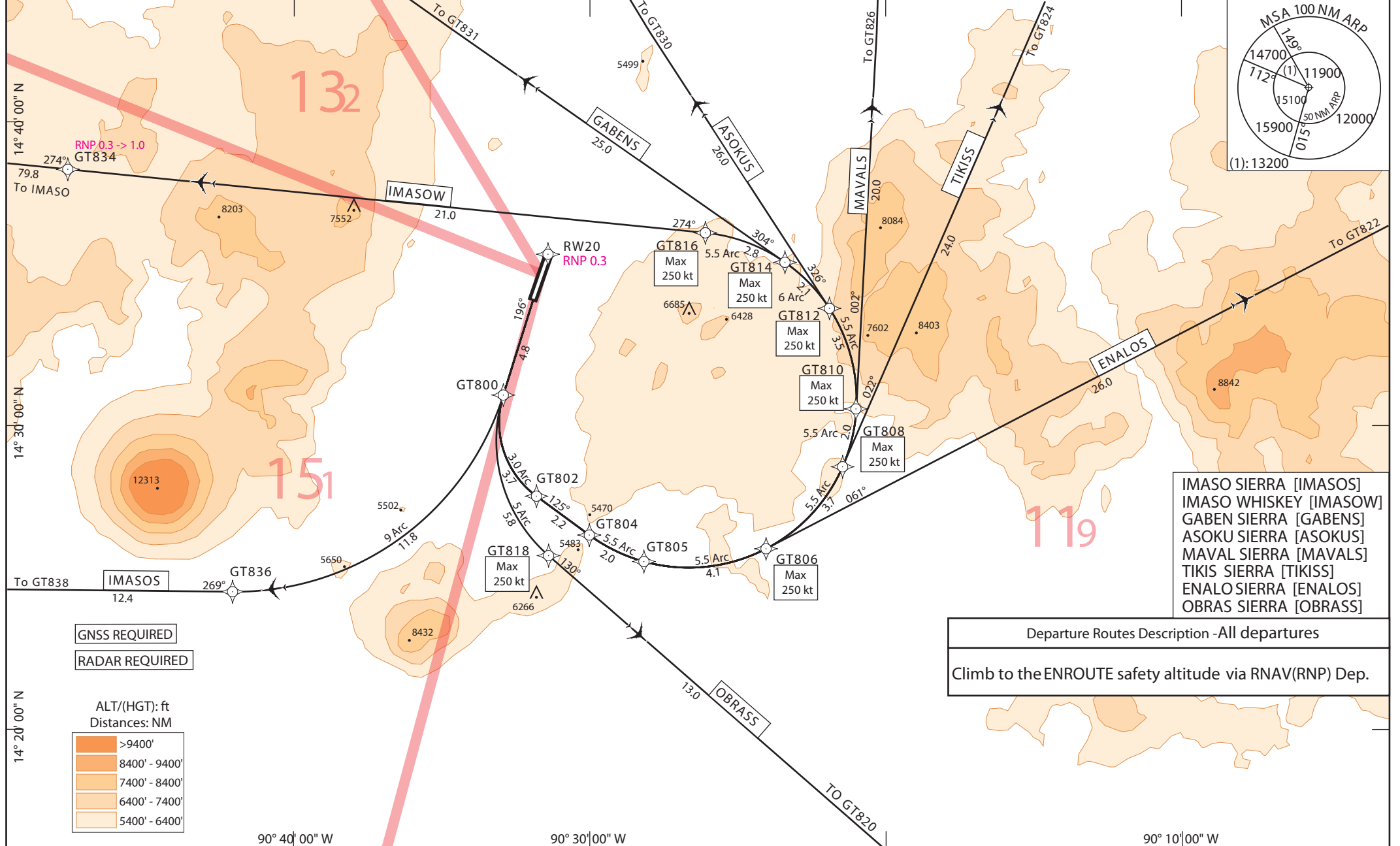


CAT: A B C D AD ELEV: 4952

LA AURORA - MGGT
RNAV (RNP) DEPARTURES RWY 20

APP: 119.3 Tower: 118.1 GND: 121.9 ATIS: 127.65 DLV:120.7 Trans Alt: 19000' AUTHORIZATION REQUIRED ARP: 14°35'00"N - 090°31'39"W VAR: 1°E (13) SID 4



SID IMASOS RWY 20														
PT	W/P ID	Flyover	Fix role	TD	CRS Val (T°)	DIST NM	ALT DESC	SPD LMT	VRT ANG	NAV PERF	RADIUS NM	ARC CTR ID	Transition Identifier	Runway Direction
IF	RW20									0.300 NM			RW20	20
TF	GT800				197,389	4,834				0.300 NM			RW20	20
RF	GT836			R	270,533	11,752				0.300 NM	9,2	GTC33	RW20	20
TF	GT838				270,533	12,358				0.300 NM			RW20	20
RF	GT840			R	286,864	3,434				0.300 NM	12	GTC15	RW20	20
TF	IMASO				286,864	72,236				1.000 NM			RW20	20

SID GABENS RWY 20														
PT	W/P ID	Flyover	Fix role	TD	CRS Val (T°)	DIST NM	ALT DESC	SPD LMT	VRT ANG	NAV PERF	RADIUS NM	ARC CTR ID	Transition Identifier	Runway Direction
IF	RW20									0.300 NM			RW20	20
TF	GT800				197,389	4,834				0.300 NM			RW20	20
RF	GT802			L	126,295	3,722				0.300 NM	3	GTC28	RW20	20
TF	GT804				126,295	2,150				0.300 NM			RW20	20
RF	GT805			L	105,475	2,000				0.300 NM	5,5	GTC29	RW20	20
RF	GT806			L	062,577	4,120				0.300 NM	5,5	GTC29	RW20	20
RF	GT808			L	023,532	3,749				0.300 NM	5,5	GTC29	RW20	20
RF	GT810			L	003,135	1,958				0.300 NM	5,5	GTC29	RW20	20
RF	GT812			L	327,000	3,468				0.300 NM	5,5	GTC29	RW20	20
RF	GT814			L	305,000	2,111		250.00 KT		0.300 NM	5,5	GTC29	RW20	20
TF	GT831				305,000	25,000				0.300 NM			RW20	20
TF	GT832				304,911	58,000				1.000 NM			RW20	20
RF	GT833			R	311,749	2,465				1.000 NM	20	GTC45	RW20	20
TF	GABEN				311,749	27,037				1.000 NM			RW20	20

SID OBRASS RWY 20														
PT	W/P ID	Flyover	Fix role	TD	CRS Val (T°)	DIST NM	ALT DESC	SPD LMT	VRT ANG	NAV PERF	RADIUS NM	ARC CTR ID	Transition Identifier	Runway Direction
IF	RW20									0.300 NM			RW20	20
TF	GT800				197,389	4,834				0.300 NM			RW20	20
RF	GT818			L	131,089	5,786		250.00 KT		0.300 NM	5	GTC30	RW20	20
TF	GT820				131,089	13,000				0.300 NM			RW20	20
TF	OBRAS				131,131	29,267				1.000 NM			RW20	20

SID ENALOS RWY 20														
PT	W/P ID	Flyover	Fix role	TD	CRS Val (T°)	DIST NM	ALT DESC	SPD LMT	VRT ANG	NAV PERF	RADIUS NM	ARC CTR ID	Transition Identifier	Runway Direction
IF	RW20									0.300 NM			RW20	20
TF	GT800				197,389	4,834				0.300 NM			RW20	20
RF	GT802			L	126,295	3,722				0.300 NM	3	GTC28	RW20	20
TF	GT804				126,295	2,150				0.300 NM			RW20	20
RF	GT805			L	105,475	2,000				0.300 NM	5,5	GTC29	RW20	20
RF	GT806			L	062,577	4,120		250.00 KT		0.300 NM	5,5	GTC29	RW20	20
TF	GT822				062,577	26,000				0.300 NM			RW20	20
TF	ENALO				062,677	51,438				1.000 NM			RW20	20

SID MAVALS RWY 20														
PT	W/P ID	Flyover	Fix role	TD	CRS Val (T°)	DIST NM	ALT DESC	SPD LMT	VRT ANG	NAV PERF	RADIUS NM	ARC CTR ID	Transition Identifier	Runway Direction
IF	RW20									0.300 NM			RW20	20
TF	GT800				197,389	4,834				0.300 NM			RW20	20
RF	GT802			L	126,295	3,722				0.300 NM	3	GTC28	RW20	20
TF	GT804				126,295	2,150				0.300 NM			RW20	20
RF	GT805			L	105,475	2,000				0.300 NM	5,5	GTC29	RW20	20
RF	GT806			L	062,577	4,120				0.300 NM	5,5	GTC29	RW20	20
RF	GT808			L	023,532	3,749				0.300 NM	5,5	GTC29	RW20	20
RF	GT810			L	003,135	1,958		250.00 KT		0.300 NM	5,5	GTC29	RW20	20
TF	GT826				003,135	20,000				0.300 NM			RW20	20
TF	GT828				003,139	32,000				1.000 NM			RW20	20
TF	MAVAL				003,147	92,116				1.000 NM			RW20	20
SID ASOKUS RWY 20														
PT	W/P ID	Flyover	Fix role	TD	CRS Val (T°)	DIST NM	ALT DESC	SPD LMT	VRT ANG	NAV PERF	RADIUS NM	ARC CTR ID	Transition Identifier	Runway Direction
IF	RW20									0.300 NM			RW20	20
TF	GT800				197,389	4,834				0.300 NM			RW20	20
RF	GT802			L	126,295	3,722				0.300 NM	3	GTC28	RW20	20
TF	GT804				126,295	2,150				0.300 NM			RW20	20
RF	GT805			L	105,475	2,000				0.300 NM	5,5	GTC29	RW20	20
RF	GT806			L	062,577	4,120				0.300 NM	5,5	GTC29	RW20	20
RF	GT808			L	023,532	3,749				0.300 NM	5,5	GTC29	RW20	20
RF	GT810			L	003,135	1,958				0.300 NM	5,5	GTC29	RW20	20
RF	GT812			L	327,000	3,468		250.00 KT		0.300 NM	5,5	GTC29	RW20	20
TF	GT830				327,000	26,000				0.300 NM			RW20	20
TF	ASOKU				326,932	81,887				1.000 NM			RW20	20

SID TIKISS RWY 20														
PT	W/P ID	Flyover	Fix role	TD	CRS Val (T°)	DIST NM	ALT DESC	SPD LMT	VRT ANG	NAV PERF	RADIUS NM	ARC CTR ID	Transition Identifier	Runway Direction
IF	RW20									0.300 NM			RW20	20
TF	GT800				197,389	4,834				0.300 NM			RW20	20
RF	GT802			L	126,295	3,722				0.300 NM	3	GTC28	RW20	20
TF	GT804				126,295	2,150				0.300 NM			RW20	20
RF	GT805			L	105,475	2,000				0.300 NM	5,5	GTC29	RW20	20
RF	GT806			L	062,577	4,120				0.300 NM	5,5	GTC29	RW20	20
RF	GT808			L	023,532	3,749		250.00 KT		0.300 NM	5,5	GTC29	RW20	20
TF	GT824				023,532	24,000				0.300 NM			RW20	20
TF	TIKIS				023,574	122,493				1.000 NM			RW20	20