

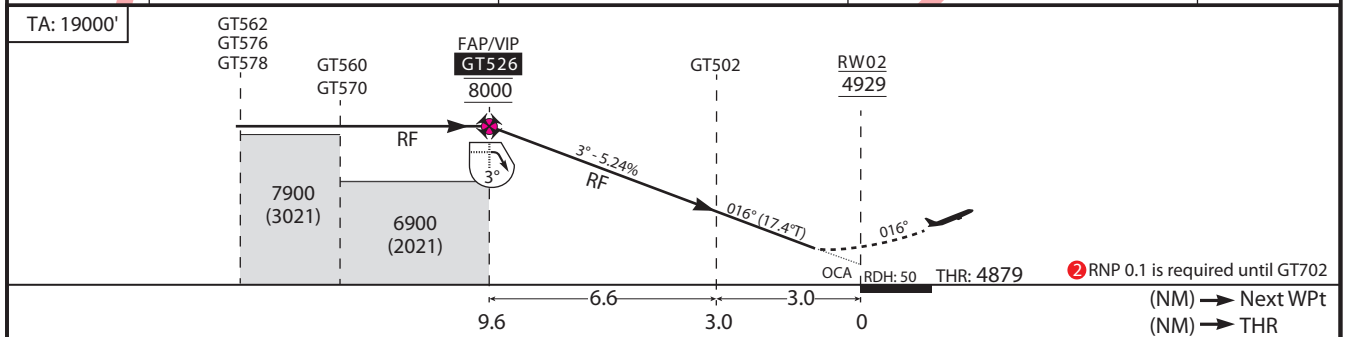
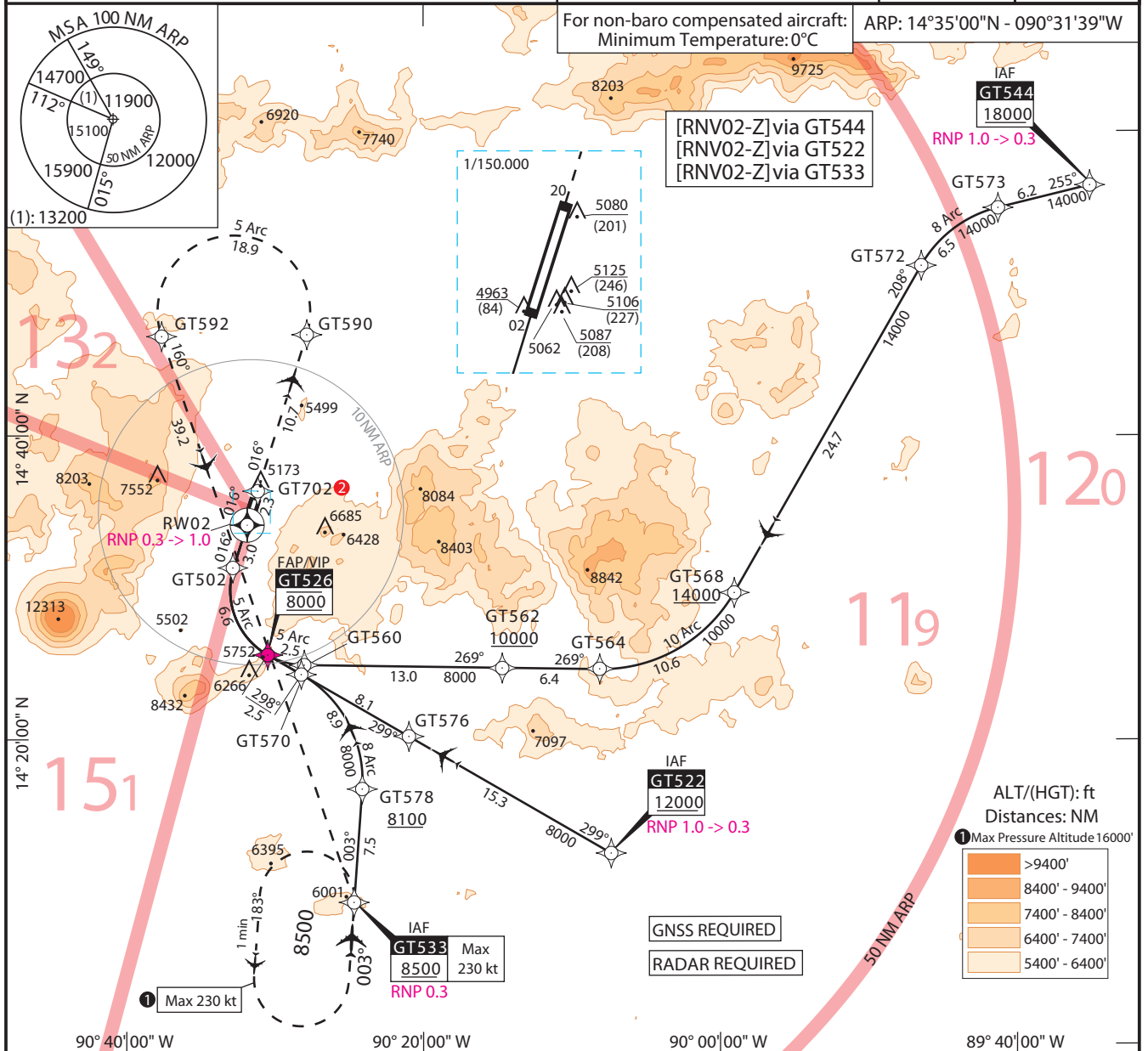
CAT: A B C D

LA AURORA - MGGT

AD ELEV: 4952, THR ELEV: 4879 (166 hPa)

RNAV (RNP) Z RWY 02

APP: 119.3 Tower: 118.1 GND: 121.9 ATIS: 127.65	AUTHORIZATION REQUIRED	VAR: 1°E (13)	APP 1
-------------------------------------------------	------------------------	---------------	-------



AD minima : Altitude and Height in feet. REF HGT: THR ELEV.

CAT	M.A. Climb Gradient : 2.5% 152 ft/NM				Missed Approach		
	RNP AR FINAL 0.3		RNP AR FINAL 0.1		Climb to minimum 8500 via the RNAV (RNP) missed approach track to GT533. At GT533 hold or start a new approach via GT533.		
	MA RNP 1.0		MA RNP 0.1 ②		CAT	ceiling	visibility
	OCA(H)	DA(H)	OCA(H)	DA(H)			
A	5222(343)	5230(351)	5174(295)	5180(301)	A	400 ft	1600 mts.
B	5244(365)	5250(371)		5200(321)	B	400 ft	1600 mts.
C	5264(385)	5270(391)		5220(341)	C	400 ft	1600 mts.
D	5282(403)	5290(411)		5240(361)	D	500 ft	2400 mts.

RNP Z RWY 02															
PT	W/P ID	Flyover	Fix role	TD	CRS Val (T°)	DIST NM	ALT DESC	Altitude (ft)	SPD LMT	VRT ANG	NAV PERF	RADIUS NM	ARC CTR ID	Transition Identifier	Runway Direction
IF	GT544		IAF				+	18000.00 FT [ALT]			1.000 NM			GT544	
TF	GT573				256,342	6,200					0.300 NM			GT544	
RF	GT572			L	209,923	6,475					0.300 NM	8	GTC12	GT544	
TF	GT568				209,923	24,657	+	14000.00 FT [ALT]			0.300 NM			GT544	
RF	GT564			R	270,841	10,648					0.300 NM	10	GTC13	GT544	
TF	GT562				270,840	6,357	+	10000.00 FT [ALT]			0.300 NM			GT544	
TF	GT560				270,813	13,000					0.300 NM			GT544	
RF	GT526			R	299,939	2,503	@	8000.00 FT [ALT]			0.300 NM	4,9	GTC09	GT544	
IF	GT522		IAF				+	12000.00 FT [ALT]			1.000 NM			GT522	
TF	GT576				300,034	15,300					0.300 NM			GT522	
TF	GT570				299,978	8,124					0.300 NM			GT522	
TF	GT526				299,948	2,544	@	8000.00 FT [ALT]			0.300 NM			GT522	
IF	GT533		IAF				+	8500.00 FT [ALT]			0.300 NM			GT533	
TF	GT578				003,991	7,451	+	8100.00 FT [ALT]			0.300 NM			GT533	
RF	GT570			L	299,948	8,940					0.300 NM	8	GTC17	GT533	
TF	GT526				299,948	2,544	@	8000.00 FT [ALT]			0.300 NM			GT533	
IF	GT526		FAF				@	8000.00 FT [ALT]			0.300 NM				02
RF	GT502			R	017,383	6,640				-3,000	0.300 NM	4,9	GTC09		02
TF	RW02	Y	MAPT		017,383	3,000	@	4928.00 FT [ALT]		-3,000	0.300 NM				02
TF	GT702				017,386	2,262					1.000 NM			GT533	
TF	GT590				017,390	10,738					1.000 NM			GT533	
RF	GT592			L	161,146	18,868					1.000 NM	5	GTC18	GT533	
TF	GT533				161,146	39,158	+	8500.00 FT [ALT]			1.000 NM			GT533	
HM	GT533			L	004,000		+	8500.00 FT [ALT]	230.00 KT		NA			GT533	