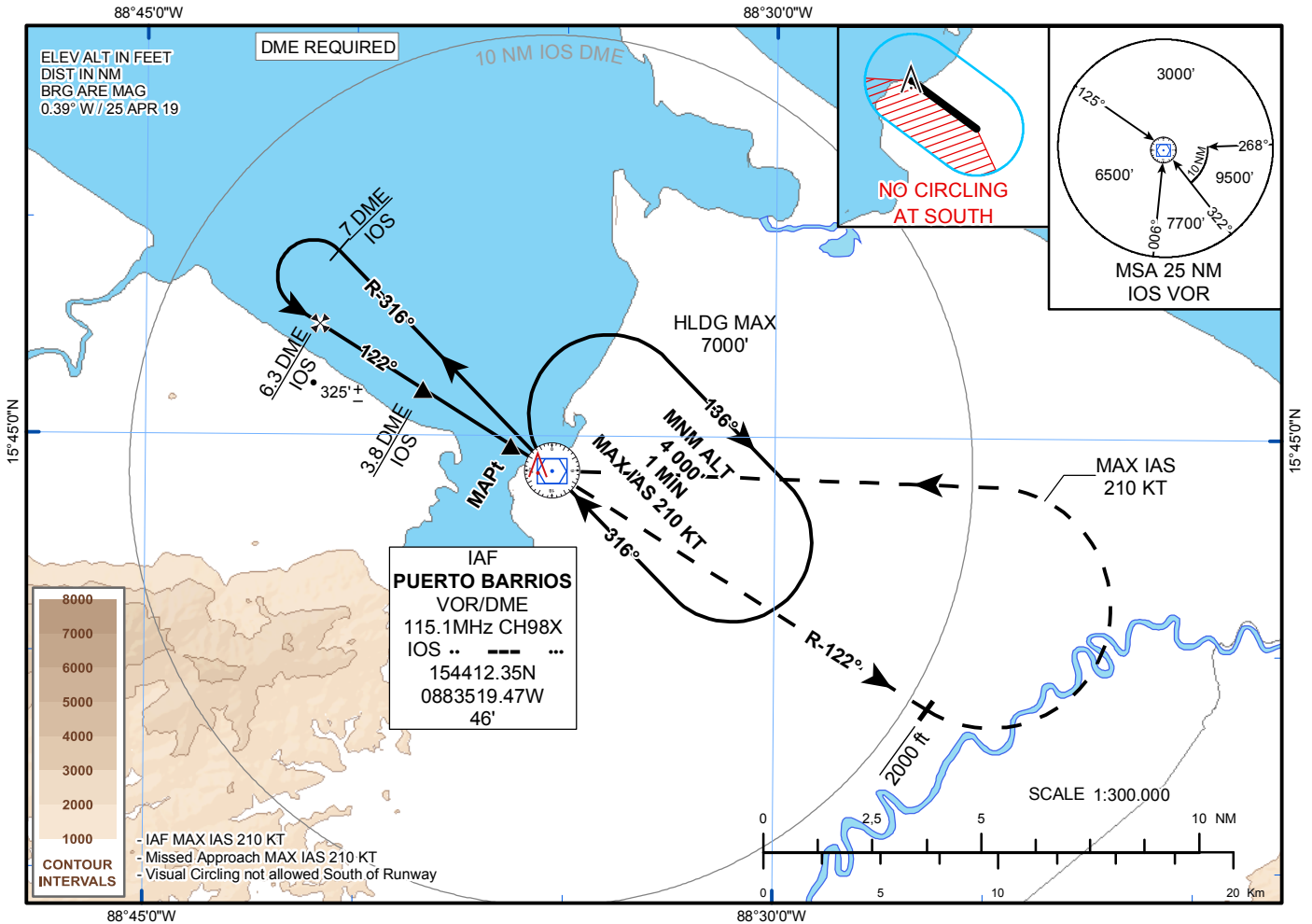


INSTRUMENT APPROACH  
CHART

AERODROME ELEV 58'  
HEIGHTS RELATED TO  
THR RWY12 ELEV 15'

TWR 118.4

PUERTO BARRIOS  
VOR Y RWY12  
CAT A B

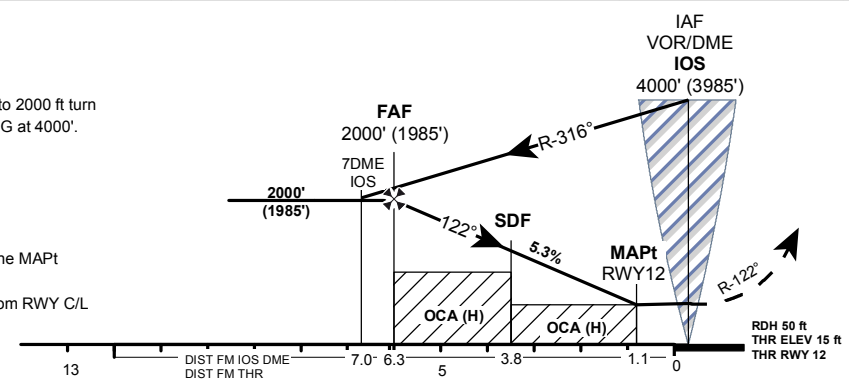


RECOMMENDED PROFILE - 322 ft/NM					
DIST THR	6	5	4	3	2
ALTITUDE	2000	1680	1360	1030	710
HEIGHT	1985	1665	1345	1015	695

TA 19000

**MISSED APPROACH:**  
MAX IAS 210 KTS. Climb on R-122 to 2000 ft turn LEFT climbing to IOS VOR and HLDG at 4000'. Request ATC instructions.

- NOTES:**
- No Turn before MAPt
  - Timing not authorized for defining the MAPt
  - NM to/from THR RWY 12
  - Final Approach Track offset 5.51 from RWY C/L



Rate of Descent							
Ground Speed	KT	70	90	100	120	140	160
FAF-MAPt 5.2NM	min:s	04:27	03:28	03:07	02:36	02:14	01:57
Rate of Descent 5.3%	ft/min	375	482	536	643	750	857
<b>OCA/H</b>	<b>A</b>	<b>B</b>	<b>C</b>	<b>NOTE:</b> 1. Final Approach Track offset 5.51 from RWY C/L. 2. Holding protected until 7000 ft.			
<b>Straight In</b>	490' (475')						
<b>Circling</b>	600' (542')	840' (782')	940' (882')				

CHANGES: NEW PROCEDURE