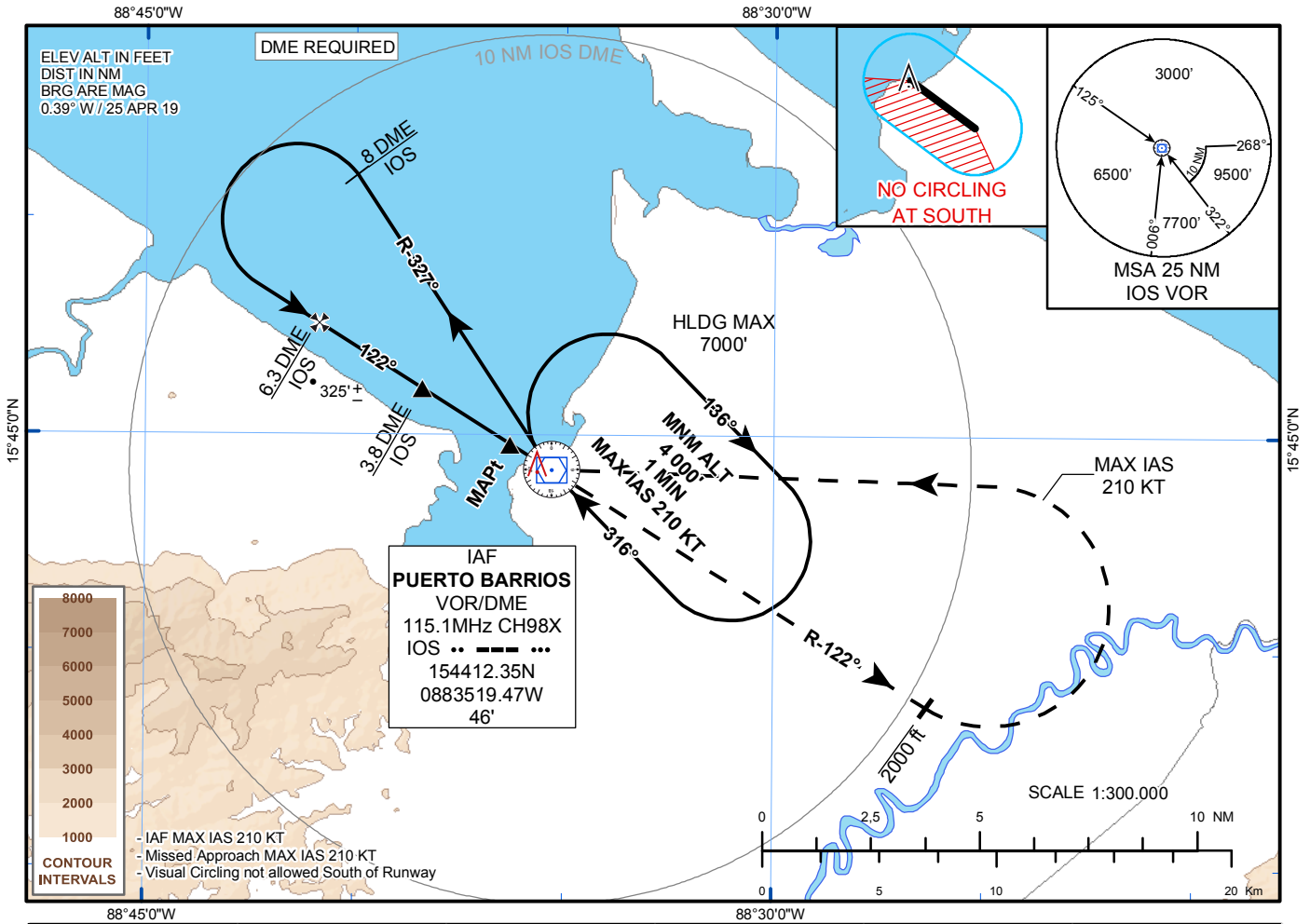


INSTRUMENT APPROACH
CHART

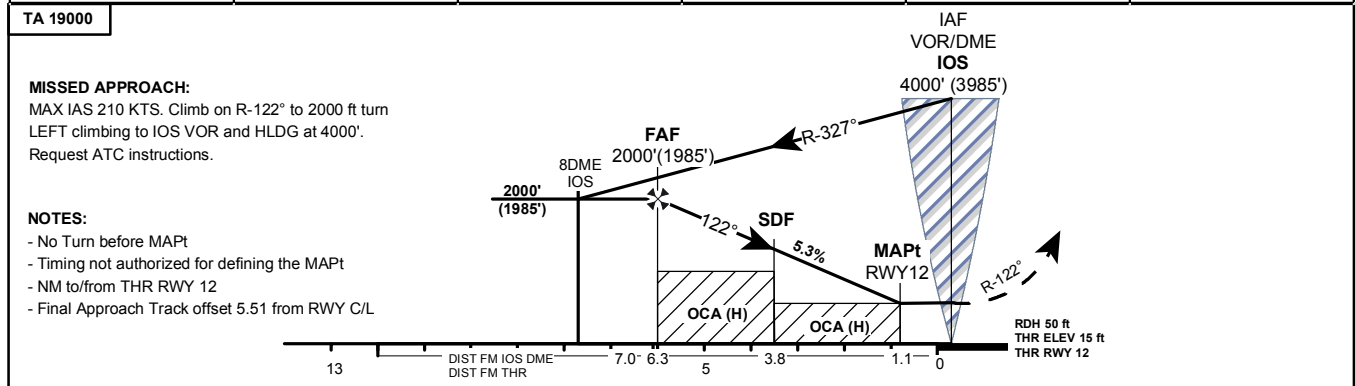
AERODROME ELEV 58'
HEIGHTS RELATED TO
THR RWY12 ELEV 15'

TWR 118.4

PUERTO BARRIOS
VOR Z RWY12
CAT C



RECOMMENDED PROFILE - 322 ft/NM					
DIST THR	6	5	4	3	2
ALTITUDE	2000	1680	1360	1030	710
HEIGHT	1985	1665	1345	1015	695



Rate of Descent							
Ground Speed	KT	70	90	100	120	140	160
FAF-MAPt 5.2NM	min:s	04:27	03:28	03:07	02:36	02:14	01:57
Rate of Descent 5.3%	ft/min	375	482	536	643	750	857
OCA/H	A	B	C	NOTE: 1. Final Approach Track offset 5.51 from RWY C/L. 2. Holding protected until 7000 ft.			
Straight In	490' (475')						
Circling	600' (542')	840' (782')	940' (882')				